

STATE OF NORTH CAROLINA
DEPARTMENT OF TRANSPORTATION
HIGHWAY DIVISION 6

PLANS

Let Date: February 21, 2024

CONTRACT ID: DF00463

TIP NO.: -----

FEDERAL AID NO.: STATE FUNDED

WBS ELEMENT NO.: 2024CPT.06.15.20782.1 & 2024CPT.06.15.20782.2

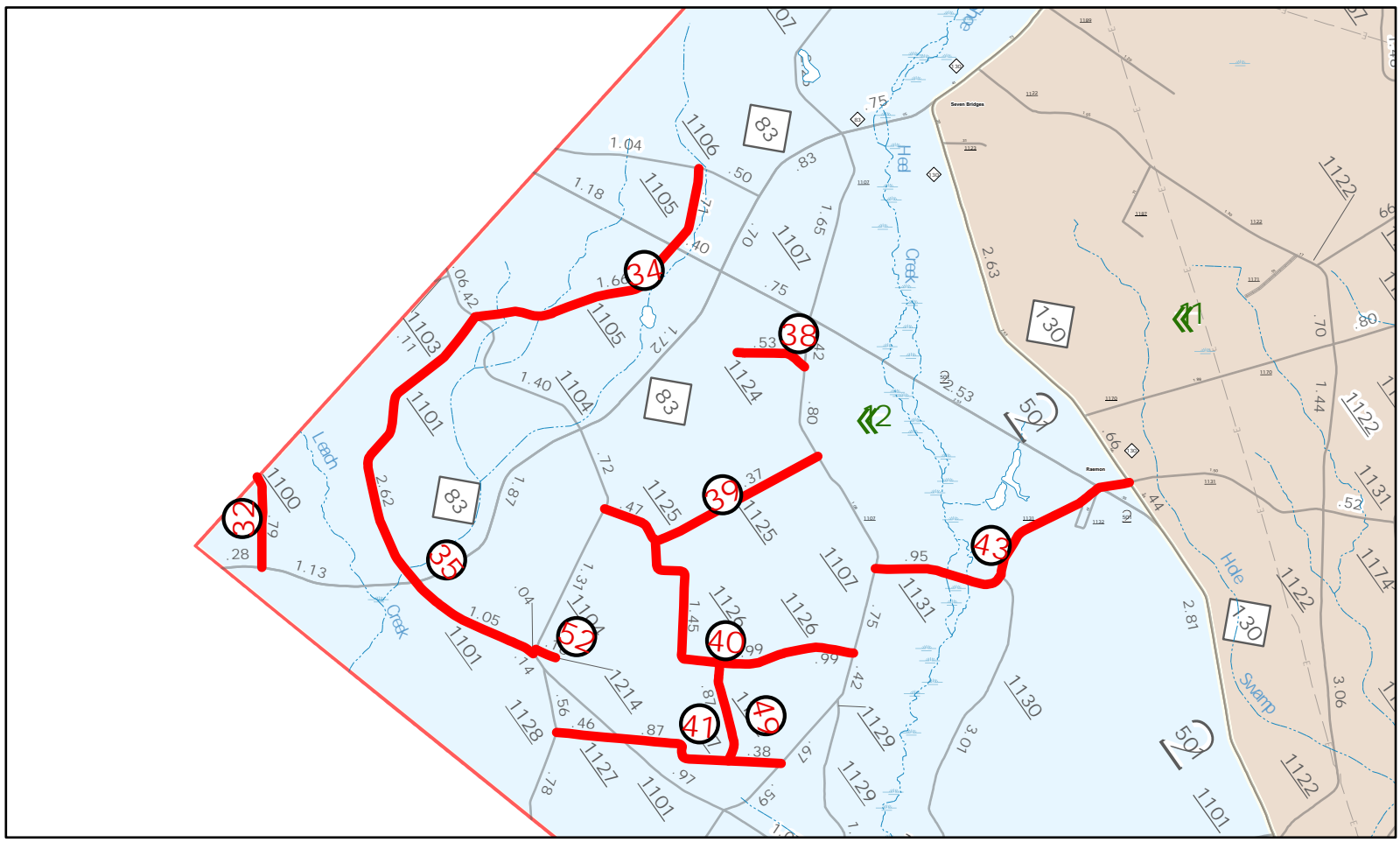
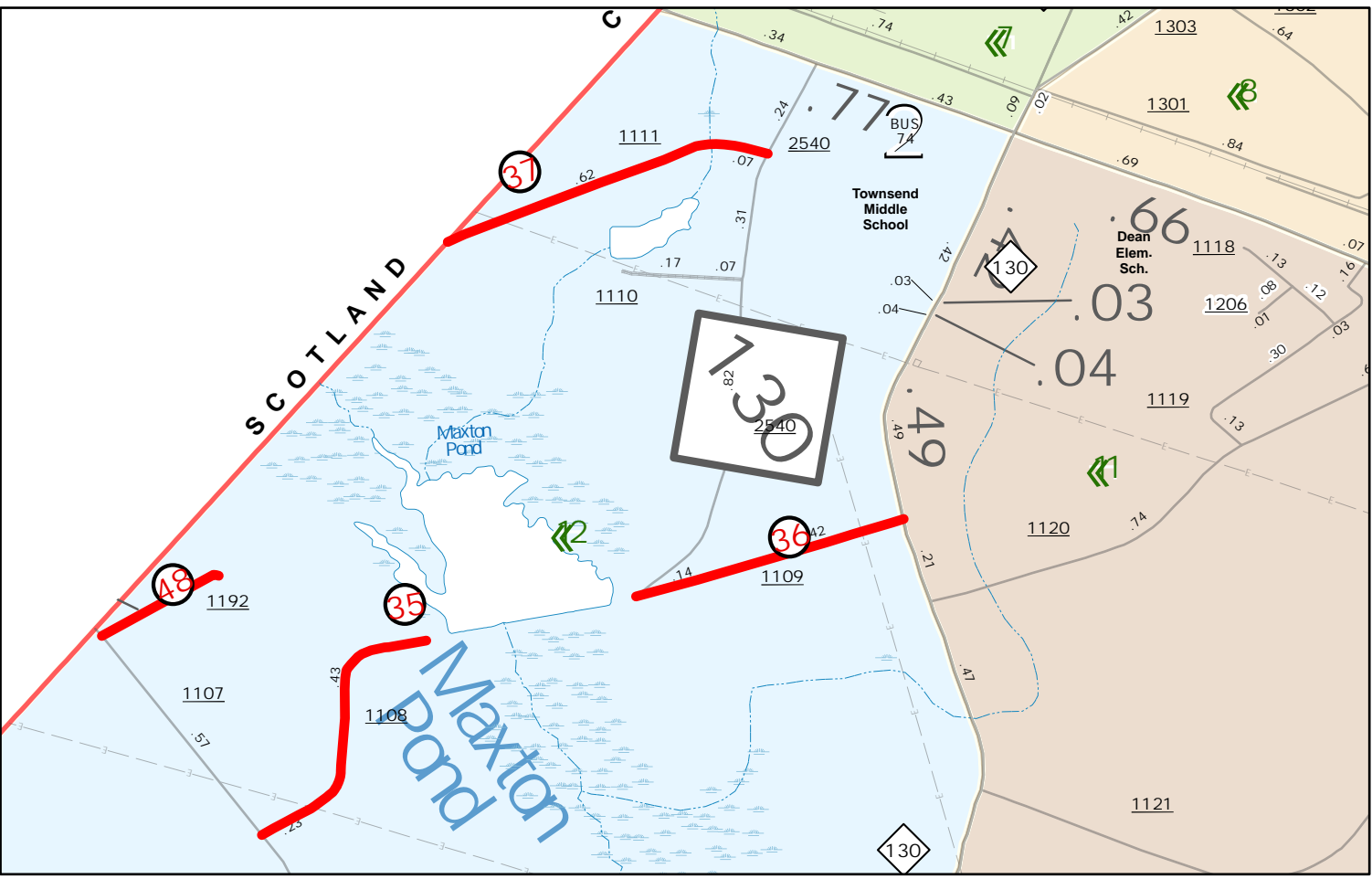
ROUTE NO.: VARIOUS

LOCATION: VARIOUS

COUNTY: ROBESON

TYPE OF WORK: ASPHALT SURFACE TREATMENT – DOUBLE & TRIPLE SEALS

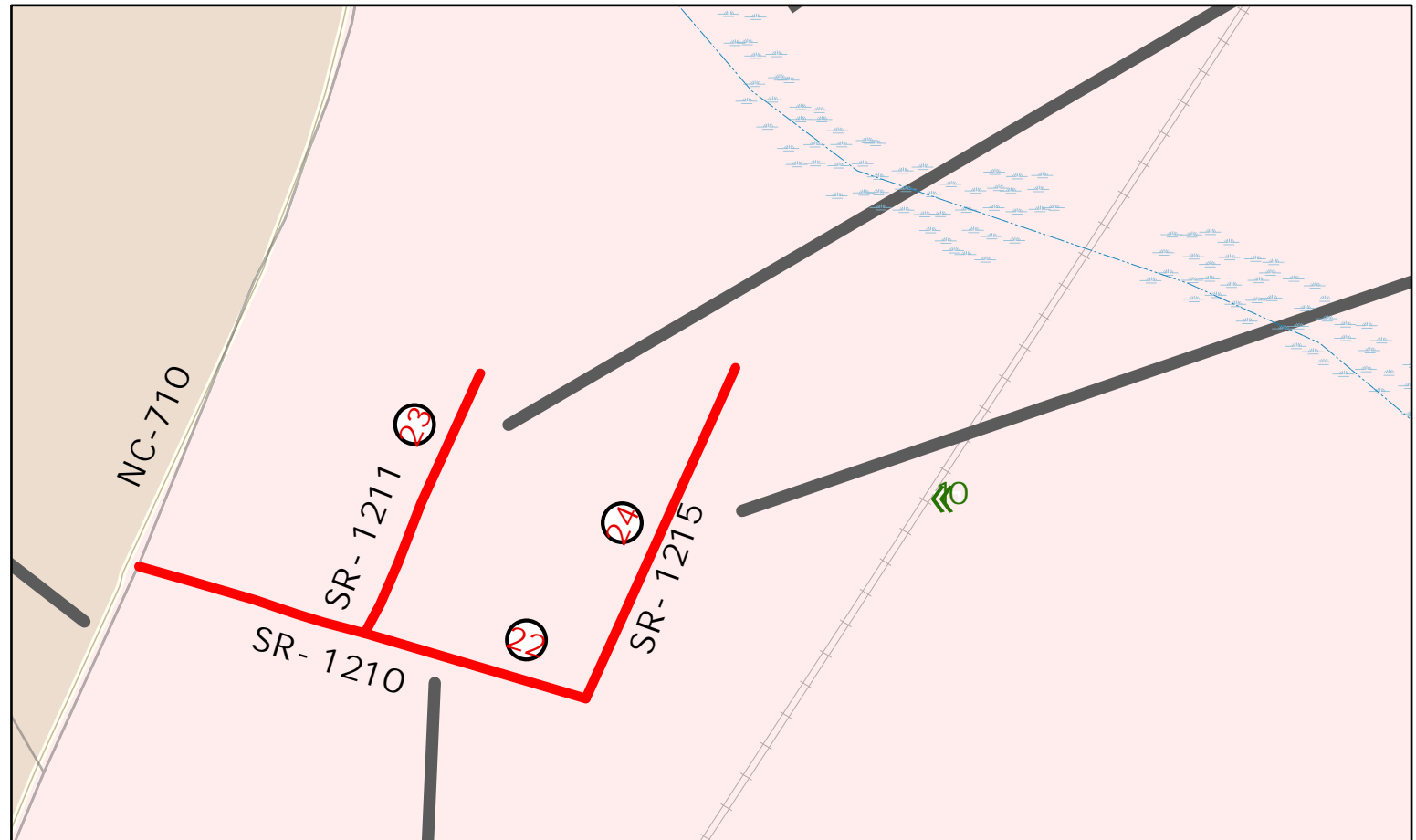
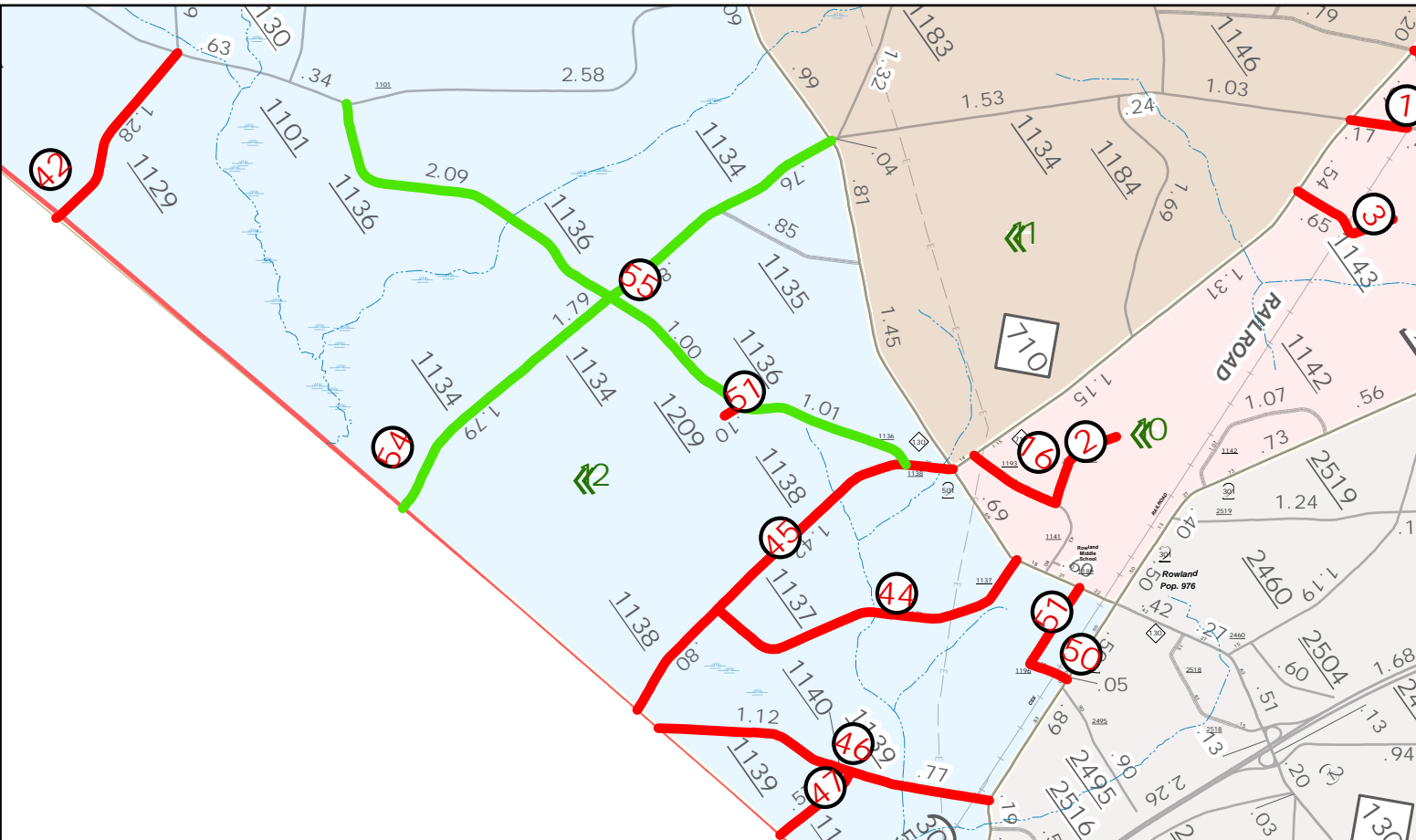
LENGTH OF PROJECT: 68.90 MILES



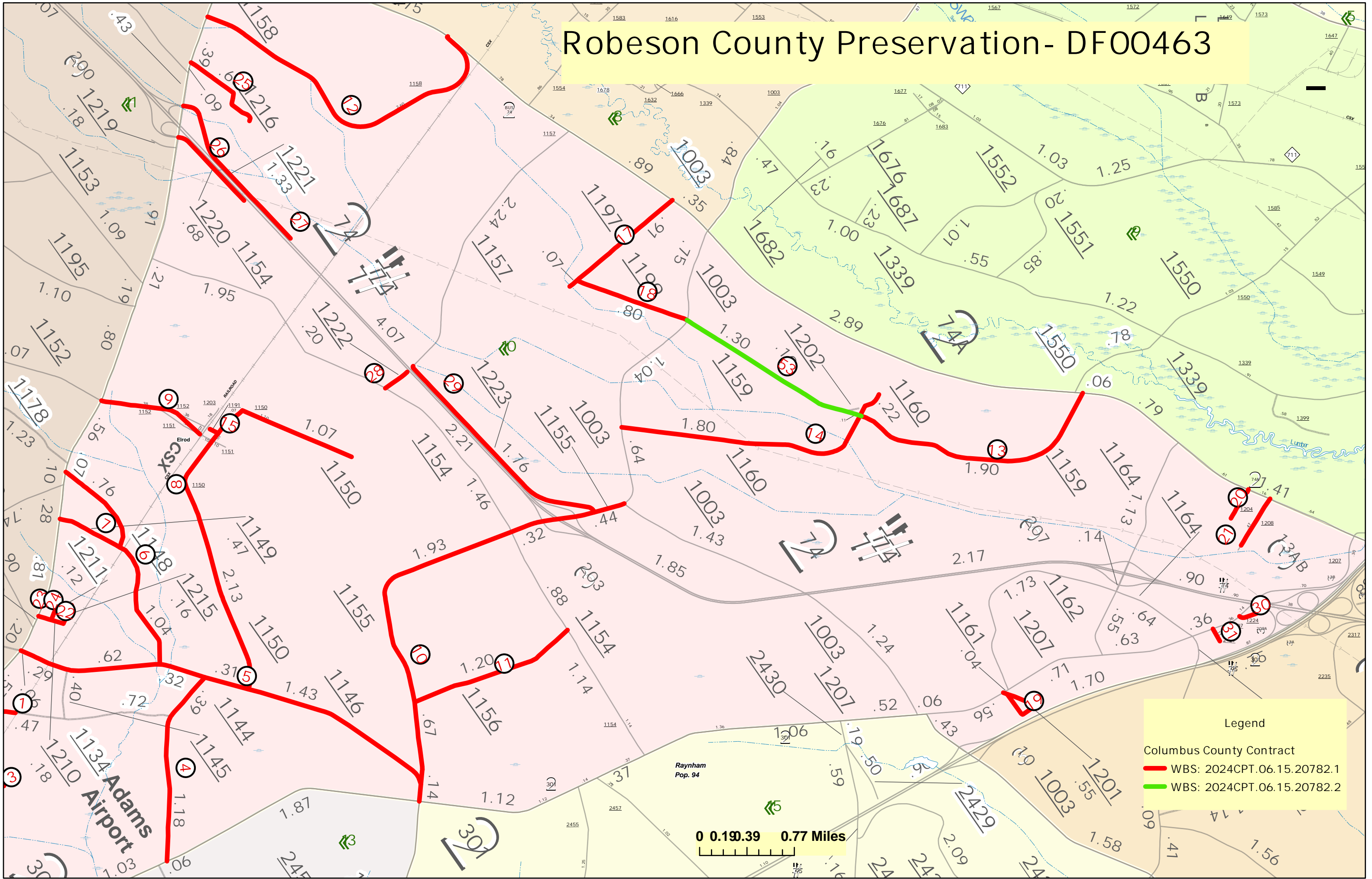
Robeson County Preservation- DF00463

0 0.420.85 1.7 Miles

- Legend
- Columbus County Contract
 - WBS: 2024CPT.06.15.20782.1 (Red line)
 - WBS: 2024CPT.06.15.20782.2 (Green line)



Robeson County Preservation- DF00463



Legend

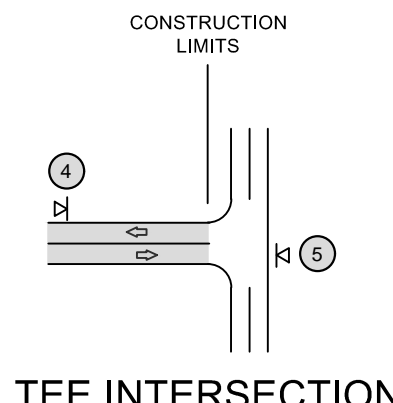
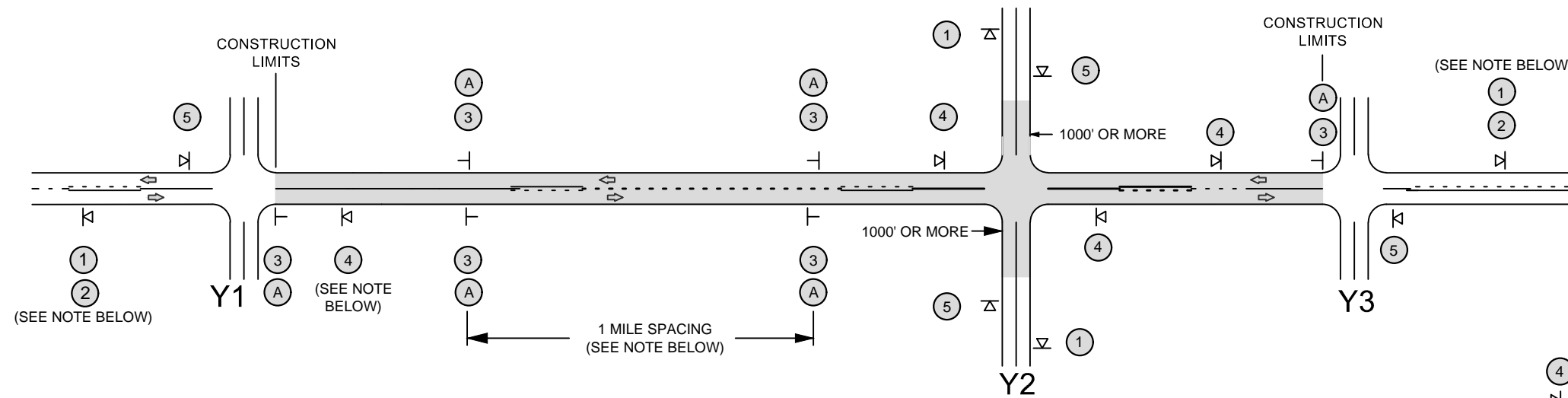
Columbus County Contract

- WBS: 2024CPT.06.15.20782.1
- WBS: 2024CPT.06.15.20782.2

0 0.19.39 0.77 Miles

SIGNING FOR ASPHALT SURFACE TREATMENT

LEGEND	
	PORTABLE SIGN
	STATIONARY SIGN
	DIRECTION OF TRAFFIC FLOW



MAINLINE (-L-) SIGNING

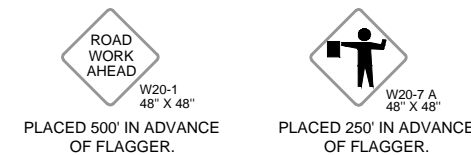
-Y- LINE SIGNING

SIGNING NOTES AND PLACEMENT PER DIRECTION	<p>① </p> <p>② </p>	<p>- PLACE 1000' PRIOR TO BEGINNING OF CONSTRUCTION LIMITS. ONLY USED ON -Y- LINES IF RESURFACING LIMITS EXTEND 1000' ALONG -Y- LINE.</p> <p>- SIGN #2 ONLY USED WHEN RESURFACING LIMITS ARE 2 OR MORE MILES IN LENGTH. ROUND UP TO THE NEAREST WHOLE NUMBER. DO NOT USE FRACTIONAL OR DECIMAL NUMBERS.</p>
	<p>③ </p> <p></p>	<p>- ALTERNATE THE FOLLOWING TWO SIGNS:</p> <p>- STARTING WITH "LOOSE GRAVEL" (W8-7) FOLLOWED BY "UNMARKED PAVEMENT".</p> <p>- PLACE INITIALLY AT THE CONSTRUCTION LIMITS AND SPACED 1 MILE APART THEREAFTER.</p> <p>- AT TEE INTERSECTIONS INSTALL INITIALLY 0.5 MILE FROM INTERSECTION AND SPACE 1 MILE APART THEREAFTER.</p>
	<p>A </p>	<p>PLACE INITIALLY AT THE CONSTRUCTION LIMITS AND SPACED 1 MILE APART THEREAFTER. IF NO -Y- LINES EXIST, PLACE 2ND SET 1/2 MILE FROM THE CONSTRUCTION LIMITS AND THEN SPACE 1 MILE THEREAFTER. SPEED LIMIT SIGN MAY BE PLACED ON SAME POST AS LOOSE GRAVEL SIGN, IF DESIRED.</p>
	<p>④ </p>	<p>- THESE ARE FOR -Y- LINES THAT ARE "THROUGH" ROADWAYS. DEAD END AND SUBDIVISION ROADS ARE NOT "THROUGH" ROADWAYS.</p> <p>- INSTALL 500' +/- FROM EACH -Y- LINE APPROACH AS SHOWN ABOVE.</p> <p>- FOR MULTIPLE -Y- LINES THAT ARE SEPARATED BY 0.25 MILES OR LESS, TREAT AS A SINGLE UNIT AND INSTALL WITHIN 500' OF EACH APPROACH.</p> <p>- A MAXIMUM OF 2 SIGN SETS PER MILE. DO NOT INSTALL WHEN -Y- LINES ARE WITHIN 0.5 MILES FROM "END ROAD WORK" SIGN.</p>
	<p>⑤ </p>	<p>PLACE 500' FOLLOWING THE END OF CONSTRUCTION LIMITS OR AS SHOWN WHEN WORK ENDS AT A 3-WAY TEE INTERSECTION.</p>
<p>THE ABOVE SIGNS ARE ALL THAT ARE REQUIRED FOR A CONTRACTOR TO BEGIN A RESURFACING CONTRACT. ANY ADDITIONAL SIGNS REQUESTED BY NCDOT DIVISIONS SHALL BE INSTALLED WITHIN 7 BUSINESS DAYS OF THE START OF CONTRACT WORK.</p>		
<p>MAPS LESS THAN 2 MILES</p>	<p>FOR AST RESURFACING MAPS WITH CONSTRUCTION LIMITS LESS THAN 2 MILES IN LENGTH, USE A STATIONARY "LOOSE GRAVEL" SIGN AT THE BEGINNING CONSTRUCTION LIMIT FOLLOWED BY AN "UNMARKED PAVEMENT" SIGN MIDWAY THROUGH AND AN "END ROAD WORK" SIGN AT THE END CONSTRUCTION LIMIT.</p>	

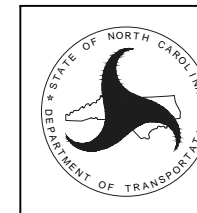
STATIONARY SIGNING NOT REQUIRED FOR THE FOLLOWING -Y- LINE CONDITIONS:

- 1) LESS THAN 1000' OF RESURFACING ALONG -Y- LINE
- 2) SUBDIVISION ROADS
- 3) DEAD END ROADS

WHEN PAVING/CONSTRUCTION ACTIVITIES PROCEED ACROSS AN UNSIGNED -Y- LINE, PORTABLE ADVANCE WARNING SIGNS SHALL BE USED ALONG THE -Y- LINE AS SHOWN BELOW. REMOVE UPON COMPLETION OF WORK.



NOTE:
IT IS THE CONTRACTOR'S RESPONSIBILITY TO ENSURE THE PROPER PLACEMENT AND LOCATION OF WORK ZONE SIGNING PER THE STANDARD DRAWING. NCDOT HAS THE RIGHT TO INSPECT THE PLANNED LOCATIONS AND REQUIRE ADJUSTMENT BY THE CONTRACTOR, AS NEEDED, OR AS DIRECTED BY THE ENGINEER.



REVISED - 12-13-2018
NCDOT - DIVISION 6
ADVANCE WARNING SIGNS FOR 2-LANE ROADWAY ASPHALT SURFACE TREATMENT

PROJECT NO.	SHEET NO.	TOTAL NO.
06.15.20782.1, 2024CPT.06.		

SUMMARY OF QUANTITIES

PROJECT NO	COUNTY	MAP NO	ROUTE	DESCRIPTION	TYP	NO LANES	LANE TYPE	FINAL SURFACE TESTING REQUIRED	WARM MIX ASPHALT REQUIRED	LENGTH	WIDTH	BEGIN MP	END MP	1803500000-E	1836000000-E	1838000000-E
														ASPHALT SURFACE TREATMENT, DOUBLE SEAL	ASPHALT SURFACE TREATMENT, TRIPLE SEAL	EMULSION FOR ASPHALT SURFACE TREATMENT
														SY	SY	GAL
														MI	FT	
2024CPT.06.15.20782.1	Robeson	1	SR-1134 / KITCHEN STREET RD	FROM NC710 TO RR	1	2	2WU	NO	NO	0.31	19	6.2	6.51	3,455		2,108
TOTAL FOR MAP NO. 1														0.31		
2024CPT.06.15.20782.1	Robeson	2	SR-1141 / WARD RD	FROM SR1193 TO DEAD END	1	2	2WU	NO	NO	0.58	20	0.51	1.09	6,805		4,151
TOTAL FOR MAP NO. 2														0.58		
2024CPT.06.15.20782.1	Robeson	3	SR-1143 / JACKSONS DAIRY RD	FROM NC710 TO DEAD END	1	2		NO	NO	0.65	19	0	0.65	7,245		4,419
TOTAL FOR MAP NO. 3														0.65		
2024CPT.06.15.20782.1	Robeson	4	SR-1144 / ADAMS RD	FROM SR1146 TO US301	1	2	2WU	NO	NO	1.57	19	0	1.57	17,500		10,675
TOTAL FOR MAP NO. 4														1.57		
2024CPT.06.15.20782.1	Robeson	5	SR-1146 / PURVIS RD	FROM SR1155 TO NC710	1	2	2WU	NO	NO	3.03	22	0	3.03	39,107		23,855
TOTAL FOR MAP NO. 5														3.03		
2024CPT.06.15.20782.1	Robeson	6	SR-1148 / BRAYBOY RD	FROM NC710 TO SR1146	1	2	2WU	NO	NO	1.8	22	0	1.8	23,167		14,132
TOTAL FOR MAP NO. 6														1.8		
2024CPT.06.15.20782.1	Robeson	7	SR-1149 / FLETCHER RD	FROM NC710 TO SR1148	1	2	2WU	NO	NO	0.47	22	0	0.47	6,066		3,700
TOTAL FOR MAP NO. 7														0.47		
2024CPT.06.15.20782.1	Robeson	8	SR-1150 / BRIDGERS RD	FROM SR1146 TO DEAD END	1	2	2WU	NO	NO	3.27	20	0	3.27	38,368		23,404
TOTAL FOR MAP NO. 8														3.27		
2024CPT.06.15.20782.1	Robeson	9	SR-1152 / TOM M RD	NC710 TO SR1151	1	2	2WU	NO	NO	0.81	20	2.5	3.31	9,504		5,797
TOTAL FOR MAP NO. 9														0.81		
2024CPT.06.15.20782.1	Robeson	10	SR-1155 / DEW RD	US301 TO SR1003	1	2	2WU	NO	NO	3.54	20	3.11	6.65	41,442		25,280
TOTAL FOR MAP NO. 10														3.54		
2024CPT.06.15.20782.1	Robeson	11	SR-1156 / RAYNHAM FARMS RD	SR1154 TO SR1155	1	2	2WU	NO	NO	1.2	20	0	1.2	14,080		8,589
TOTAL FOR MAP NO. 11														1.2		
2024CPT.06.15.20782.1	Robeson	12	SR-1158 / CANAL RD	US74 TO NC710	1	2	2WU	NO	NO	2.6	20	0	2.6	30,530		18,623
TOTAL FOR MAP NO. 12														2.6		
2024CPT.06.15.20782.1	Robeson	13	SR-1159 / BIGGS RD	SR1160 TO US74	1	2		NO	NO	1.89	20	1.41	3.3	22,223		13,556
TOTAL FOR MAP NO. 13														1.89		
2024CPT.06.15.20782.1	Robeson	14	SR-1160 / ADDISON TRAM RD	FROM DEAD END TO SR1003	1	2	2WU	NO	NO	2.02	22	0	2.02	26,046		15,888
TOTAL FOR MAP NO. 14														2.02		
2024CPT.06.15.20782.1	Robeson	15	SR-1191 / E SIDE RD	SR1150 TO DEAD END	1	2		NO	NO	0.07	18	0	0.07	739		451
TOTAL FOR MAP NO. 15														0.07		
2024CPT.06.15.20782.1	Robeson	16	SR-1193 / HINES STREET	NC710 TO SR1141	1	2		NO	NO	0.54	20	0	0.54	6,336		3,865
TOTAL FOR MAP NO. 16														0.54		
2024CPT.06.15.20782.1	Robeson	17	SR-1197 / HARLEYVILLE RD	US74 TO DEAD END	1	2		NO	NO	0.98	20	0	0.98	11,522		7,028
TOTAL FOR MAP NO. 17														0.98		
2024CPT.06.15.20782.1	Robeson	18	SR-1199 / BERTHA JONES RD	SR1197 TO SR1003	1	2		NO	NO	0.8	21	0	0.8	9,856		6,012
TOTAL FOR MAP NO. 18														0.8		
2024CPT.06.15.20782.1	Robeson	19	SR-1201 / CIRCLE DR	SR1207 TO SR1201	1	2		NO	NO	0.55	18	0	0.55	5,808		3,543
TOTAL FOR MAP NO. 19														0.55		
2024CPT.06.15.20782.1	Robeson	20	SR-1204 / PARROT DR	US74 TO DEAD END	1	2		NO	NO	0.26	18	0	0.26	2,767		1,688
TOTAL FOR MAP NO. 20														0.26		
2024CPT.06.15.20782.1	Robeson	21	SR-1208 / HARLIE RD	US74 TO DEAD END	1	2		NO	NO	0.42	18	0	0.42	4,477		2,731
TOTAL FOR MAP NO. 21														0.42		
2024CPT.06.15.20782.1	Robeson	22	SR-1210 / THURMAN DR	NC710 TO SR1215	1	2		NO	NO	0.18	18	0	0.18	1,901		1,160
TOTAL FOR MAP NO. 22														0.18		
2024CPT.06.15.20782.1	Robeson	23	SR-1211 / JUSTIN RD	SR1210 TO DEAD END	1	2		NO	NO	0.12	18	0	0.12	1,267		773
TOTAL FOR MAP NO. 23														0.12		
2024CPT.06.15.20782.1	Robeson	24	SR-1215 / THURMAN DR	SR1210 TO DEAD END	1	2		NO	NO	0.16	20	0	0.16	1,877		1,145
TOTAL FOR MAP NO. 24														0.16		
2024CPT.06.15.20782.1	Robeson	25	SR-1216 / TIMBER OAK DR	NC710 TO DEAD END	1	2		NO	NO	0.66	20	0	0.66	7,744		4,724
TOTAL FOR MAP NO. 25														0.66		
2024CPT.06.15.20782.1	Robeson	26	SR-1220 / COUNTERTOP LN	NC710 TO DEAD END	1	2		NO	NO	0.68	20	0	0.68	8,002		4,881
TOTAL FOR MAP NO. 26														0.68		
2024CPT.06.15.20782.1	Robeson	27	SR-1221 / RUBY RD	NC710 TO DEAD END	1	2		NO	NO	1.33	22	0	1.33	17,192		10,487
TOTAL FOR MAP NO. 27														1.33		
2024CPT.06.15.20782.1	Robeson	28	SR-1222 / HENRY BERRY RD	SR1154 TO DEAD END	1	2		NO	NO	0.2	20	0	0.2	2,347		1,432
TOTAL FOR MAP NO. 28														0.2		
2024CPT.06.15.20782.1	Robeson	29	SR-1223 / HENRY BERRY RD	SR1155 TO SR1157	1	2		NO	NO	1.76	20	0	1.76	20,674		12,611
TOTAL FOR MAP NO. 29														1.76		
2024CPT.06.15.20782.1	Robeson	30	SR-1224 /	SR1207 TO DEAD END	1	2		NO	NO	0.18	20	0	0.18	2,135		1,302
TOTAL FOR MAP NO. 30														0.18		
2024CPT.06.15.20782.1	Robeson	31	SR-2421 / WONDERFUL RD	SR1207 TO DEAD END	1	2		NO	NO	0.11	20	0	0.11	1,279		780
TOTAL FOR MAP NO. 31														0.11		
2024CPT.06.15.20782.1	Robeson	32	SR-1100 / J B RD	NC83 TO SCOTLND CO	1	2		NO	NO	0.79	18	0	0.79	8,342		5,089
TOTAL FOR MAP NO. 32														0.79		
2024CPT.06.15.20782.1	Robeson	33	SR-1101 / GADDYS MILL RD	SR1104 TO SR1104	1	2		NO	NO	3.68	18	0	3.68	38,861		23,705
TOTAL FOR MAP NO. 33														3.68		
2024CPT.06.15.20782.1	Robeson	34	SR-1105 / BETHEA RD	SR1104 TO SR1106	1	2		NO	NO	2.37	20	0	2.37	27,808		16,963
TOTAL FOR MAP NO. 34														2.37		
2024CPT.06.15.20782.1	Robeson	35	SR-1108 / HAYES RD	DEAD END TO SR1107	1	2		NO	NO	0.65	22	0	0.65	8,428		5,141
TOTAL FOR MAP NO. 35														0.65		
2024CPT.06.15.20782.1	Robeson	36	SR-1109 / MAXTON POND RD	SR1108 TO NC130	1	2		NO	NO	0.56	20	0	0.56	6,571		4,008
TOTAL FOR MAP NO. 36														0.56		
2024CPT.06.15.20782.1	Robeson	37	SR-1111 / JOHNS RD	SCOTLND CO TO SR1108	1	2		NO	NO	0.69	20	0	0.69	8,084		4,931
TOTAL FOR MAP NO. 37														0.69		
2024CPT.06.15.20782.1	Robeson	38	SR-1124 / JAMES W GRAHAM RD	SR1107 TO DEAD END	1	2		NO	NO	0.53	20	0	0.53	6,219		3,794
TOTAL FOR MAP NO. 38														0.53		
2024CPT.06.15.20782.1	Robeson	39	SR-1125 / SHAWNESTY RD	SR1107 TO SR1104	1	2		NO	NO	1.84	20	0	1.84	21,589		13,169
TOTAL FOR MAP NO. 39														1.84		
2024CPT.06.15.20782.1	Robeson	40	SR-1126 / EVA RD	SR1107 TO SR1125	1	2		NO	NO	2.44	20	0	2.44	28,629		17,464
TOTAL FOR MAP NO. 40														2.44		
2024CPT.06.15.20782.1	Robeson	41	SR-1127 / ELISE RD	SR1107 TO SR1128	1	2		NO	NO	1.71	20	0	1.71	20,064		12,239
TOTAL FOR MAP NO. 41														1.71		
2024CPT.06.15.20782.1	Robeson	42	SR-1129 / MCCRIMMON RD	SC SL TO SR1101	1	2		NO	NO	1.28	20	0	1.28	15,007		9,154
TOTAL FOR MAP NO. 42														1.28		
2024CPT.06.15.20782.1	Robeson	43	SR-1131 / MIDWAY RD	SR1107 TO NC130	1	2		NO	NO	2.26	24	0	2.26	31,835		19,419
TOTAL FOR MAP NO. 43														2.26		
2024CPT.06.15.20782.1	Robeson	44	SR-1137 / ROWLAND CEMETERY RD	SR1138 TO US501	1	2		NO	NO	1.95	18	0	1.95	20,592		12,561
TOTAL FOR MAP NO. 44														1.95		
2024CPT.06.15.20782.1	Robeson	45	SR-1138 / ASHPOLE CHURCH RD	SC SL TO US501	1	2		NO	NO	2.46	20	0	2.46	28,852		17,600
TOTAL FOR MAP NO. 45														2.46		
2024CPT.06.15.20782.1	Robeson	46	SR-1139 / BRASWELL RD	US301 TO SC SL	1	2		NO	NO	1.88	20	0	1.88	22,035		13,441
TOTAL FOR MAP NO. 46														1.88		
2024CPT.06.15.20782.1	Robeson	47	SR-1140 / RICHARDS RD	SR1139 TO SC SL	1	2		NO	NO	0.57	20	0	0.57	6,653		4,058
TOTAL FOR MAP NO. 47														0.57		
2024CPT.06.15.20782.1	Robeson	48	SR-1192 / RD	SR1107 TO DEAD END	1	2		NO	NO	0.28	18	0	0.28	2,957		1,804
TOTAL FOR MAP NO. 48														0.28		
2024CPT.06.15.20782.1	Robeson	49	SR-1194 / CASIE RD	SR1126 TO SR1127	1	2		NO	NO	0.87	18	0	0.87	9,187		5,604
TOTAL FOR MAP NO. 49														0.87		
2024CPT.06.15.20782.1	Robeson	50	SR-1196 / FRANKLIN ST	US301 TO SR1185	1	2		NO	NO	0.22	20	0	0.22	2,581		1,574
TOTAL FOR MAP NO. 50														0.22		
2024CPT.06.15.20782.1	Robeson	51	SR-1209 / MANNING RD	SR1136 TO DEAD END	1	2		NO	NO	0.1	18	0	0.1	1,056		644
TOTAL FOR MAP NO. 51														0.1		
2024CPT.06.15.20782.1	Robeson	52	SR-1214 / STEALTH DR	SR1214 TO SR1104												

PROJECT NO.	SHEET NO.	TOTAL NO.
5.20782.1, 2024CPT.		

THERMOPLASTIC AND PAINT QUANTITIES

PROJECT NO	COUNTY	MAP NO	ROUTE	DESCRIPTION	TYP NO	LANES	LANE TYPE	LENGTH	WIDTH	BEGIN MP	END MP	4413000000-E WORK ZONE ADVANCE/GENERAL WARNING SIGNING	4457000000-N TEMPORARY TRAFFIC CONTROL	
								MI	FT			SF	LS	
2024CPT.06.15.20782.1	Robeson	1	SR-1134 / KITCHEN STREET RD	FROM NC710 TO RR	1	2	2WU	0.31	19	6.2	6.51	50	1.00	
TOTAL FOR MAP NO. 1													50	1
2024CPT.06.15.20782.1	Robeson	2	SR-1141 / WARD RD	FROM SR1193 TO DEAD END	1	2	2WU	0.58	20	0.51	1.09	93		
TOTAL FOR MAP NO. 2													93	
2024CPT.06.15.20782.1	Robeson	3	SR-1143 / JACKSONS DAIRY RD	FROM NC710 TO DEAD END	1	2		0.65	19	0	0.65	104		
TOTAL FOR MAP NO. 3													104	
2024CPT.06.15.20782.1	Robeson	4	SR-1144 / ADAMS RD	FROM SR1146 TO US301	1	2	2WU	1.57	19	0	1.57	251		
TOTAL FOR MAP NO. 4													251	
2024CPT.06.15.20782.1	Robeson	5	SR-1146 / PURVIS RD	FROM SR1155 TO NC710	1	2	2WU	3.03	22	0	3.03	485		
TOTAL FOR MAP NO. 5													485	
2024CPT.06.15.20782.1	Robeson	6	SR-1148 / BRAYBOY RD	FROM NC710 TO SR1146	1	2	2WU	1.8	22	0	1.8	287		
TOTAL FOR MAP NO. 6													287	
2024CPT.06.15.20782.1	Robeson	7	SR-1149 / FLETCHER RD	FROM NC710 TO SR1148	1	2	2WU	0.47	22	0	0.47	75		
TOTAL FOR MAP NO. 7													75	
2024CPT.06.15.20782.1	Robeson	8	SR-1150 / BRIDGERS RD	FROM SR1146 TO DEAD END	1	2	2WU	3.27	20	0	3.27	523		
TOTAL FOR MAP NO. 8													523	
2024CPT.06.15.20782.1	Robeson	9	SR-1152 / TOM M RD	NC710 TO SR1151	1	2	2WU	0.81	20	2.5	3.31	130		
TOTAL FOR MAP NO. 9													130	
2024CPT.06.15.20782.1	Robeson	10	SR-1155 / DEW RD	US301 TO SR1003	1	2	2WU	3.54	20	3.11	6.65	565		
TOTAL FOR MAP NO. 10													565	
2024CPT.06.15.20782.1	Robeson	11	SR-1156 / RAYNHAM FARMS RD	SR1154 TO SR1155	1	2	2WU	1.2	20	0	1.2	192		
TOTAL FOR MAP NO. 11													192	
2024CPT.06.15.20782.1	Robeson	12	SR-1158 / CANAL RD	US74 TO NC710	1	2	2WU	2.6	20	0	2.6	416		
TOTAL FOR MAP NO. 12													416	
2024CPT.06.15.20782.1	Robeson	13	SR-1159 / BIGGS RD	SR1160 TO US74	1	2		1.89	20	1.41	3.3	303		
TOTAL FOR MAP NO. 13													303	
2024CPT.06.15.20782.1	Robeson	14	SR-1160 / ADDISON TRAM RD	FROM DEAD END TO SR1003	1	2	2WU	2.02	22	0	2.02	323		
TOTAL FOR MAP NO. 14													323	
2024CPT.06.15.20782.1	Robeson	15	SR-1191 / E SIDE RD	SR1150 TO DEAD END	1	2		0.07	18	0	0.07	11		
TOTAL FOR MAP NO. 15													11	
2024CPT.06.15.20782.1	Robeson	16	SR-1193 / HINES STREET	NC710 TO SR1141	1	2		0.54	20	0	0.54	86		
TOTAL FOR MAP NO. 16													86	
2024CPT.06.15.20782.1	Robeson	17	SR-1197 / HARLEYVILLE RD	US74 TO DEAD END	1	2		0.98	20	0	0.98	157		
TOTAL FOR MAP NO. 17													157	
2024CPT.06.15.20782.1	Robeson	18	SR-1199 / BERTHA JONES RD	SR1197 TO SR1003	1	2		0.8	21	0	0.8	128		
TOTAL FOR MAP NO. 18													128	
2024CPT.06.15.20782.1	Robeson	19	SR-1201 / CIRCLE DR	SR1207 TO SR1201	1	2		0.55	18	0	0.55	88		
TOTAL FOR MAP NO. 19													88	
2024CPT.06.15.20782.1	Robeson	20	SR-1204 / PARROT DR	US74 TO DEAD END	1	2		0.26	18	0	0.26	42		
TOTAL FOR MAP NO. 20													42	
2024CPT.06.15.20782.1	Robeson	21	SR-1208 / HARLIE RD	US74 TO DEAD END	1	2		0.42	18	0	0.42	68		
TOTAL FOR MAP NO. 21													68	
2024CPT.06.15.20782.1	Robeson	22	SR-1210 / THURMAN DR	NC710 TO SR1215	1	2		0.18	18	0	0.18	29		
TOTAL FOR MAP NO. 22													29	
2024CPT.06.15.20782.1	Robeson	23	SR-1211 / JUSTIN RD	SR1210 TO DEAD END	1	2		0.12	18	0	0.12	19		
TOTAL FOR MAP NO. 23													19	
2024CPT.06.15.20782.1	Robeson	24	SR-1215 / THURMAN DR	SR1210 TO DEAD END	1	2		0.16	20	0	0.16	26		
TOTAL FOR MAP NO. 24													26	
2024CPT.06.15.20782.1	Robeson	25	SR-1216 / TIMBER OAK DR	NC710 TO DEAD END	1	2		0.66	20	0	0.66	106		
TOTAL FOR MAP NO. 25													106	
2024CPT.06.15.20782.1	Robeson	26	SR-1220 / COUNTERTOP LN	NC710 TO DEAD END	1	2		0.68	20	0	0.68	109		
TOTAL FOR MAP NO. 26													109	
2024CPT.06.15.20782.1	Robeson	27	SR-1221 / RUBY RD	NC710 TO DEAD END	1	2		1.33	22	0	1.33	213		
TOTAL FOR MAP NO. 27													213	
2024CPT.06.15.20782.1	Robeson	28	SR-1222 / HENRY BERRY RD	SR1154 TO DEAD END	1	2		0.2	20	0	0.2	32		
TOTAL FOR MAP NO. 28													32	
2024CPT.06.15.20782.1	Robeson	29	SR-1223 / HENRY BERRY RD	SR1155 TO SR1157	1	2		1.76	20	0	1.76	282		
TOTAL FOR MAP NO. 29													282	
2024CPT.06.15.20782.1	Robeson	30	SR-1224 /	SR1207 TO DEAD END	1	2		0.18	20	0	0.18	29		
TOTAL FOR MAP NO. 30													29	
2024CPT.06.15.20782.1	Robeson	31	SR-2421 / WONDERFUL RD	SR1207 TO DEAD END	1	2		0.11	20	0	0.11	17		
TOTAL FOR MAP NO. 31													17	
2024CPT.06.15.20782.1	Robeson	32	SR-1100 / J B RD	NC83 TO SCOTLND CO	1	2		0.79	18	0	0.79	126		
TOTAL FOR MAP NO. 32													126	
2024CPT.06.15.20782.1	Robeson	33	SR-1101 / GADDYS MILL RD	SR1104 TO SR1104	1	2		3.68	18	0	3.68	589		
TOTAL FOR MAP NO. 33													589	
2024CPT.06.15.20782.1	Robeson	34	SR-1105 / BETHEA RD	SR1104 TO SR1106	1	2		2.37	20	0	2.37	379		
TOTAL FOR MAP NO. 34													379	
2024CPT.06.15.20782.1	Robeson	35	SR-1108 / HAYES RD	DEAD END TO SR1107	1	2		0.65	22	0	0.65	104		
TOTAL FOR MAP NO. 35													104	
2024CPT.06.15.20782.1	Robeson	36	SR-1109 / MAXTON POND RD	SR1108 TO NC130	1	2		0.56	20	0	0.56	90		
TOTAL FOR MAP NO. 36													90	
2024CPT.06.15.20782.1	Robeson	37	SR-1111 / JOHNS RD	SCOTLND CO TO SR1108	1	2		0.69	20	0	0.69	110		
TOTAL FOR MAP NO. 37													110	
2024CPT.06.15.20782.1	Robeson	38	SR-1124 / JAMES W GRAHAM RD	SR1107 TO DEAD END	1	2		0.53	20	0	0.53	85		
TOTAL FOR MAP NO. 38													85	
2024CPT.06.15.20782.1	Robeson	39	SR-1125 / SHAWNESTY RD	SR1107 TO SR1104	1	2		1.84	20	0	1.84	294		
TOTAL FOR MAP NO. 39													294	
2024CPT.06.15.20782.1	Robeson	40	SR-1126 / EVA RD	SR1107 TO SR1125		2		2.44	20	0	2.44	390		
TOTAL FOR MAP NO. 40													390	
2024CPT.06.15.20782.1	Robeson	41	SR-1127 / ELISE RD	SR1107 TO SR1128	1	2		1.71	20	0	1.71	274		
TOTAL FOR MAP NO. 41													274	
2024CPT.06.15.20782.1	Robeson	42	SR-1129 / MCCRIMMON RD	SC SL TO SR1101	1	2		1.28	20	0	1.28	205		
TOTAL FOR MAP NO. 42													205	
2024CPT.06.15.20782.1	Robeson	43	SR-1131 / MIDWAY RD	SR1107 TO NC130	1	2		2.26	24	0	2.26	362		
TOTAL FOR MAP NO. 43													362	
2024CPT.06.15.20782.1	Robeson	44	SR-1137 / ROWLAND CEMETERY RD	SR1138 TO US501	1	2		1.95	18	0	1.95	312		
TOTAL FOR MAP NO. 44													312	
2024CPT.06.15.20782.1	Robeson	45	SR-1138 / ASHPOLE CHURCH RD	SC SL TO US501	1	2		2.46	20	0	2.46	393		
TOTAL FOR MAP NO. 45													393	
2024CPT.06.15.20782.1	Robeson	46	SR-1139 / BRASWELL RD	US301 TO SC SL	1	2		1.88	20	0	1.88	300		
TOTAL FOR MAP NO. 46													300	
2024CPT.06.15.20782.1	Robeson	47	SR-1140 / RICHARDS RD	SR1139 TO SC SL	1	2		0.57	20	0	0.57	91		
TOTAL FOR MAP NO. 47													91	
2024CPT.06.15.20782.1	Robeson	48	SR-1192 / RD	SR1107 TO DEAD END	1	2		0.28	18	0	0.28	45		
TOTAL FOR MAP NO. 48													45	
2024CPT.06.15.20782.1	Robeson	49	SR-1194 / CASIE RD	SR1126 TO SR1127	1	2		0.87	18	0	0.87	139		
TOTAL FOR MAP NO. 49													139	
2024CPT.06.15.20782.1	Robeson	50	SR-1196 / FRANKLIN ST	US301 TO SR1185	1	2		0.22	20	0	0.22	35		
TOTAL FOR MAP NO. 50													35	
2024CPT.06.15.20782.1	Robeson	51	SR-1209 / MANNING RD	SR1136 TO DEAD END	1	2		0.1	18	0	0.1	16		
TOTAL FOR MAP NO. 51													16	
2024CPT.06.15.20782.1	Robeson	52	SR-1214 / STEALTH DR	SR1214 TO SR1104	1	2		0.16	18	0	0.16	26		
TOTAL FOR MAP NO. 52													26	
TOTAL FOR PROJ NO. 2024CPT.06.15.20782.1													60.03	1,000
2024CPT.06.15.20782.2	Robeson	53	SR-1159 / BIGGS RD	SR1003 TO SR1160	2	2		1.41	20	0	1.41	226		
TOTAL FOR MAP NO. 53													226	
2024CPT.06.15.20782.2	Robeson	54	SR-1134 / KITCHEN STREET RD	SC SL TO US501	2	2		3.36	18	0	3.36	538		
TOTAL FOR MAP NO. 54													538	
2024CPT.06.15.20782.2	Robeson	55	SR-1136 / PERSIMMON RD	SR1138 TO SR1101	2	2		4.1	18	0	4.1	656		
TOTAL FOR MAP NO. 55													656	
TOTAL FOR PROJ NO. 2024CPT.06.15.20782.2													8.87	1,420
GRAND TOTAL													68.9	1,000